

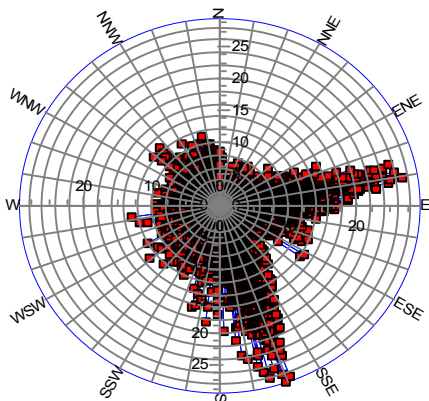
Project: **Mt Hays**  
 Description:  
 Data history:  
 D:\WindPRO\Data\Project\MtHays\WindData\ORGANIZED\2000\WSPR\01\_01\_2001\_01\_31\_2001\_Organized.dat  
 D:\WindPRO\Data\Project\MtHays\WindData\ORGANIZED\2000\WSPR\02\_01\_2001\_02\_28\_2001\_Organized.dat  
 D:\WindPRO\Data\Project\MtHays\WindData\ORGANIZED\2000\WSPR\03\_01\_2001\_03\_31\_2001\_Organized.dat  
 D:\WindPRO\Data\Project\MtHays\WindData\ORGANIZED\2000\WSPR\04\_01\_2001\_04\_30\_2001\_Organized.dat  
 D:\WindPRO\Data\Project\MtHays\WindData\ORGANIZED\2000\WSPR\05\_01\_2001\_05\_31\_2001\_Organized.dat  
 D:\WindPRO\Data\Project\MtHays\WindData\ORGANIZED\2000\WSPR\06\_01\_2001\_06\_30\_2001\_Organized.dat  
 D:\WindPRO\Data\Project\MtHays\WindData\ORGANIZED\2000\WSPR\07\_01\_2001\_07\_31\_2001\_Organized.dat  
 D:\WindPRO\Data\Project\MtHays\WindData\ORGANIZED\2000\WSPR\08\_01\_2001\_08\_31\_2001\_Organized.dat  
 D:\WindPRO\Data\Project\MtHays\WindData\ORGANIZED\2000\WSPR\09\_01\_2001\_09\_30\_2001\_Organized.dat  
 D:\WindPRO\Data\Project\MtHays\WindData\ORGANIZED\2000\WSPR\10\_01\_2001\_10\_31\_2001\_Organized.dat  
 D:\WindPRO\Data\Project\MtHays\WindData\ORGANIZED\2000\WSPR\11\_01\_2001\_11\_30\_2001\_Organized.dat  
 D:\WindPRO\Data\Project\MtHays\WindData\ORGANIZED\2000\WSPR\12\_01\_2001\_12\_31\_2001\_Organized.dat  
 D:\WindPRO\Data\Project\MtHays\WindData\ORGANIZED\2001\WSPR\01\_01\_2002\_01\_31\_2002\_Organized.dat  
 D:\WindPRO\Data\Project\MtHays\WindData\ORGANIZED\2001\WSPR\02\_01\_2002\_02\_28\_2002\_Organized.dat  
 D:\WindPRO\Data\Project\MtHays\WindData\ORGANIZED\2001\WSPR\03\_01\_2002\_03\_31\_2002\_Organized.dat  
 D:\WindPRO\Data\Project\MtHays\WindData\ORGANIZED\2001\WSPR\04\_01\_2002\_04\_30\_2002\_Organized.dat  
 D:\WindPRO\Data\Project\MtHays\WindData\ORGANIZED\2001\WSPR\05\_01\_2002\_05\_31\_2002\_Organized.dat  
 D:\WindPRO\Data\Project\MtHays\WindData\ORGANIZED\2001\WSPR\06\_01\_2002\_06\_30\_2002\_Organized.dat  
 D:\WindPRO\Data\Project\MtHays\WindData\ORGANIZED\2001\WSPR\07\_01\_2002\_07\_31\_2002\_Organized.dat  
 D:\WindPRO\Data\Project\MtHays\WindData\ORGANIZED\2001\WSPR\08\_01\_2002\_08\_31\_2002\_Organized.dat  
 D:\WindPRO\Data\Project\MtHays\WindData\ORGANIZED\2001\WSPR\09\_01\_2002\_09\_30\_2002\_Organized.dat  
 D:\WindPRO\Data\Project\MtHays\WindData\ORGANIZED\2001\WSPR\10\_01\_2002\_10\_31\_2002\_Organized.dat  
 D:\WindPRO\Data\Project\MtHays\WindData\ORGANIZED\2001\WSPR\11\_01\_2002\_11\_30\_2002\_Organized.dat  
 D:\WindPRO\Data\Project\MtHays\WindData\ORGANIZED\2001\WSPR\12\_01\_2002\_12\_31\_2002\_Organized.dat  
 D:\WindPRO\Data\Project\MtHays\WindData\ORGANIZED\2002\WSPR\01\_01\_2003\_01\_31\_2003\_Organized.dat  
 D:\WindPRO\Data\Project\MtHays\WindData\ORGANIZED\2002\WSPR\02\_01\_2003\_02\_28\_2003\_Organized.dat  
 D:\WindPRO>Data\Project\MtHays\WindData\ORGANIZED\2002\WSPR\03\_01\_2003\_03\_31\_2003\_Organized.dat

Printed Page  
 09/10/2003 7:53 PM / 1  
 Licensed user:  
**WindPRO course version**  
 Time-limited until 06.10.03

Noble  
 Calculated:  
 09/10/2003 7:53 PM/

**Meteo data report, height: 30.0 m**

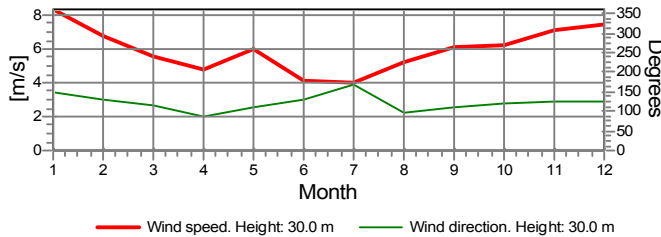
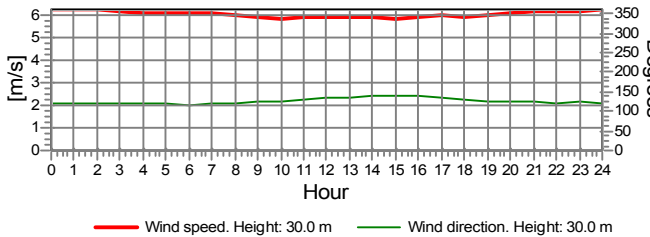
Name of meteo object: Met tower 1



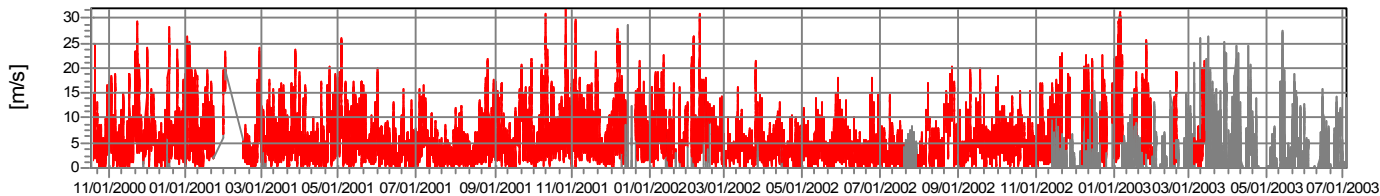
Wind speed [m/s]

**Monthly mean values of wind speed in m/s**

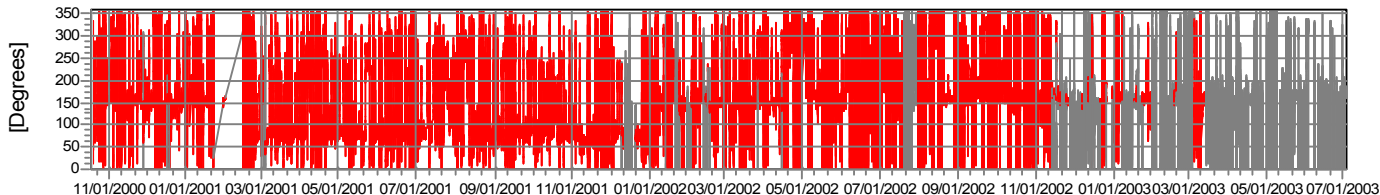
| Month          | 2000 | 2001 | 2002 | 2003 | mean | mean of months |
|----------------|------|------|------|------|------|----------------|
| Jan            |      | 9.0  | 6.3  | 10.8 | 8.4  | 8.7            |
| Feb            |      | 5.2  | 7.5  | 10.5 | 6.9  | 7.7            |
| Mar            |      | 6.5  | 4.8  | 5.5  | 5.6  | 5.6            |
| Apr            |      | 5.6  | 4.1  |      | 4.8  | 4.8            |
| May            |      | 7.3  | 4.9  |      | 6.1  | 6.1            |
| Jun            |      | 4.0  | 4.3  |      | 4.2  | 4.2            |
| Jul            |      | 4.1  | 3.8  |      | 4.0  | 4.0            |
| Aug            |      | 4.7  | 5.7  |      | 5.2  | 5.2            |
| Sep            |      | 6.8  | 5.6  |      | 6.2  | 6.2            |
| Oct            | 6.1  | 7.2  | 5.4  |      | 6.3  | 6.2            |
| Nov            | 7.5  | 6.6  | 7.4  |      | 7.1  | 7.1            |
| Dec            | 6.4  | 7.9  | 9.6  |      | 7.4  | 7.9            |
| mean, all data | 6.8  | 6.2  | 5.5  | 8.9  | 6.1  |                |
| mean of months | 6.6  | 6.2  | 5.8  | 8.9  |      | 6.1            |



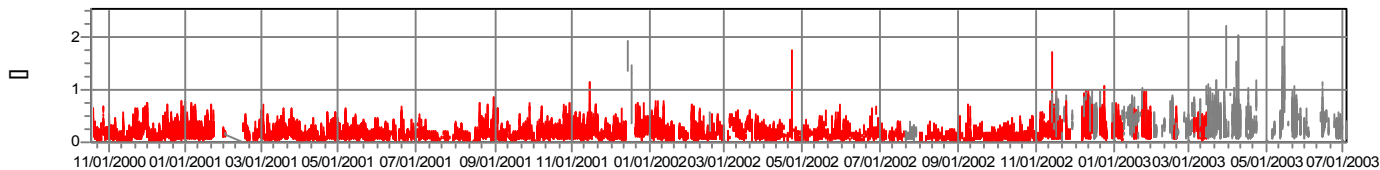
Wind speed



Wind direction



Turbulence intensity  
 V>4.0 m/s



Project:

Mt Hays

Description:

D:\hays\Proj\WindPRO\Hays\wind data\ORGANISED\28m\wind\01\_11\_2000\_02\_01\_2000\_02pm.dat  
 D:\hays\Proj\WindPRO\Hays\wind data\ORGANISED\28m\wind\01\_11\_2000\_02\_01\_2000\_02pm.dat  
 D:\hays\Proj\WindPRO\Hays\wind data\ORGANISED\28m\wind\01\_11\_2000\_02\_01\_2000\_02pm.dat  
 D:\hays\Proj\WindPRO\Hays\wind data\ORGANISED\28m\wind\01\_11\_2000\_02\_01\_2000\_02pm.dat  
 D:\hays\Proj\WindPRO\Hays\wind data\ORGANISED\28m\wind\01\_11\_2000\_02\_01\_2000\_02pm.dat  
 D:\hays\Proj\WindPRO\Hays\wind data\ORGANISED\28m\wind\01\_11\_2000\_02\_01\_2000\_02pm.dat  
 D:\hays\Proj\WindPRO\Hays\wind data\ORGANISED\28m\wind\01\_11\_2000\_02\_01\_2000\_02pm.dat  
 D:\hays\Proj\WindPRO\Hays\wind data\ORGANISED\28m\wind\01\_11\_2000\_02\_01\_2000\_02pm.dat  
 D:\hays\Proj\WindPRO\Hays\wind data\ORGANISED\28m\wind\01\_11\_2000\_02\_01\_2000\_02pm.dat  
 D:\hays\Proj\WindPRO\Hays\wind data\ORGANISED\28m\wind\01\_11\_2000\_02\_01\_2000\_02pm.dat  
 D:\hays\Proj\WindPRO\Hays\wind data\ORGANISED\28m\wind\01\_11\_2000\_02\_01\_2000\_02pm.dat  
 D:\hays\Proj\WindPRO\Hays\wind data\ORGANISED\28m\wind\01\_11\_2000\_02\_01\_2000\_02pm.dat  
 D:\hays\Proj\WindPRO\Hays\wind data\ORGANISED\28m\wind\01\_11\_2000\_02\_01\_2000\_02pm.dat  
 D:\hays\Proj\WindPRO\Hays\wind data\ORGANISED\28m\wind\01\_11\_2000\_02\_01\_2000\_02pm.dat  
 D:\hays\Proj\WindPRO\Hays\wind data\ORGANISED\28m\wind\01\_11\_2000\_02\_01\_2000\_02pm.dat  
 D:\hays\Proj\WindPRO\Hays\wind data\ORGANISED\28m\wind\01\_11\_2000\_02\_01\_2000\_02pm.dat  
 D:\hays\Proj\WindPRO\Hays\wind data\ORGANISED\28m\wind\01\_11\_2000\_02\_01\_2000\_02pm.dat  
 D:\hays\Proj\WindPRO\Hays\wind data\ORGANISED\28m\wind\01\_11\_2000\_02\_01\_2000\_02pm.dat  
 D:\hays\Proj\WindPRO\Hays\wind data\ORGANISED\28m\wind\01\_11\_2000\_02\_01\_2000\_02pm.dat  
 D:\hays\Proj\WindPRO\Hays\wind data\ORGANISED\28m\wind\01\_11\_2000\_02\_01\_2000\_02pm.dat  
 D:\hays\Proj\WindPRO\Hays\wind data\ORGANISED\28m\wind\01\_11\_2000\_02\_01\_2000\_02pm.dat  
 D:\hays\Proj\WindPRO\Hays\wind data\ORGANISED\28m\wind\01\_11\_2000\_02\_01\_2000\_02pm.dat

Printed Page  
09/10/2003 7:53 PM / 3

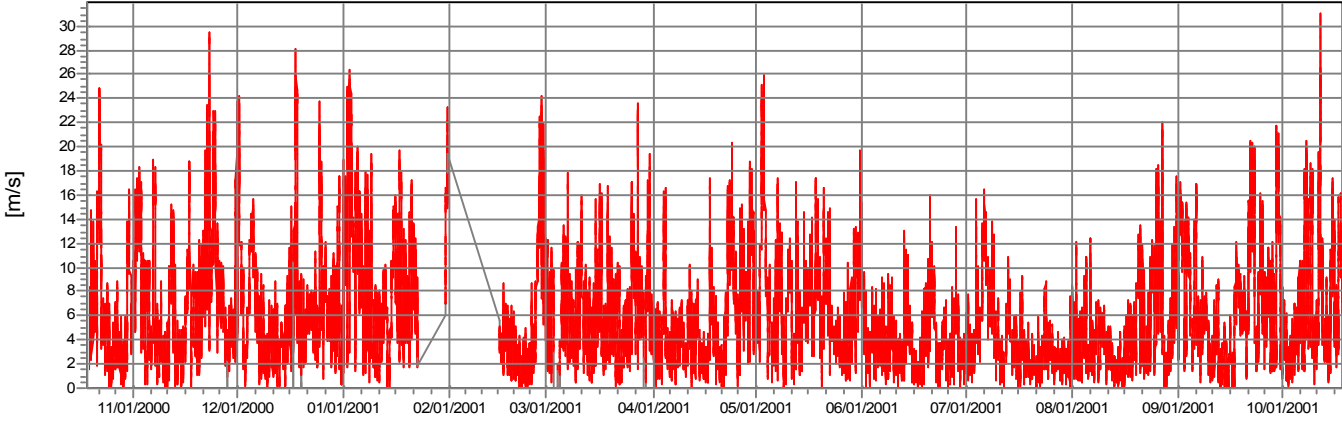
Licensed user:  
**WindPRO course version**  
Time-limited until 06.10.03

Noble  
Calculated:  
09/10/2003 7:53 PM/

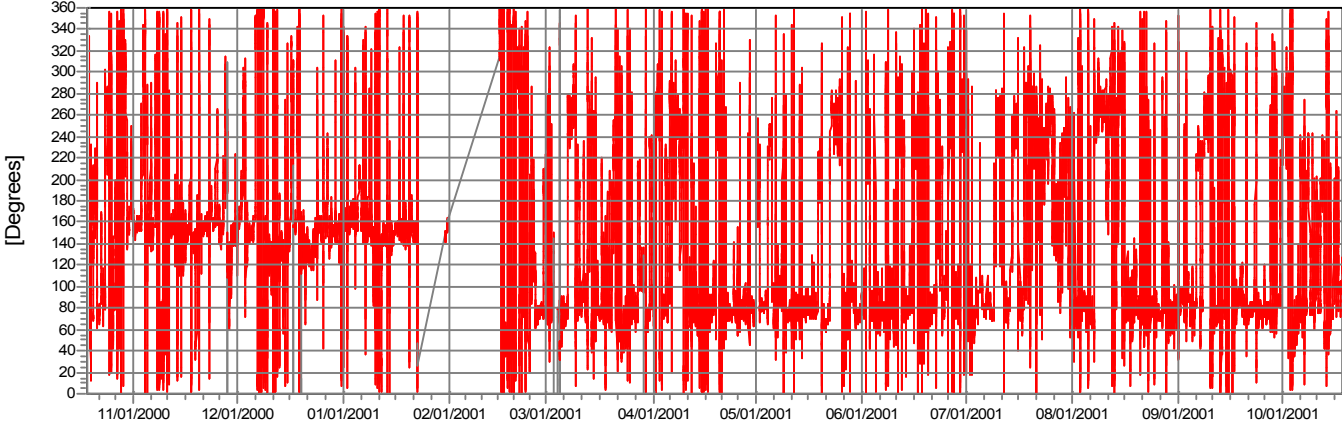
### Meteo data report, height: 30.0 m

Name of meteo object: Met tower 1

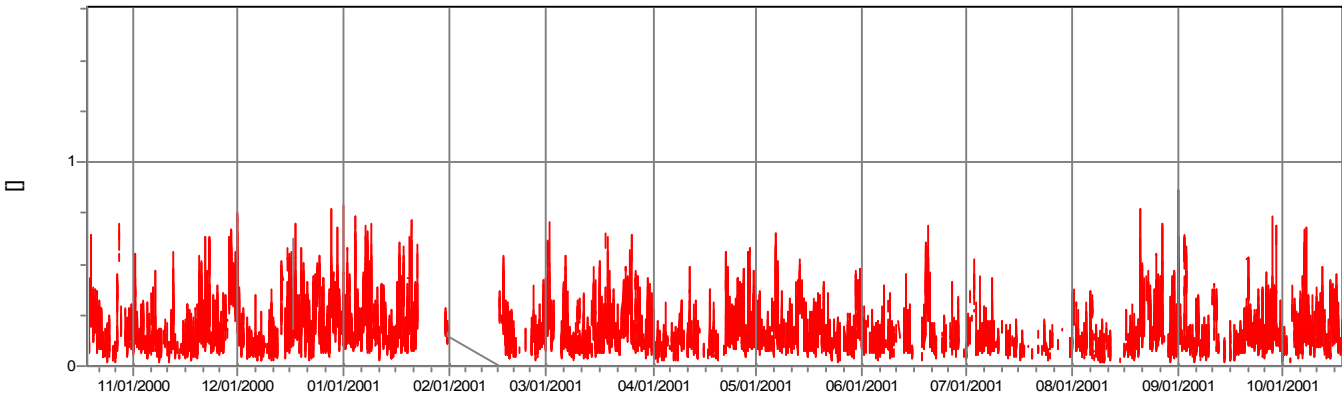
Wind speed



Wind direction



Turbulence intensity  
V>4.0 m/s



Project:

Mt Hays

Description:

DATA HISTORY  
 D:\WindPRO\Course\proj\mt\_hays\88 Mt Hays wind data\ORGANIZACIJA\28km\Hays\_031117 to 0310184 Organized.dat  
 D:\WindPRO\Course\proj\mt\_hays\88 Mt Hays wind data\ORGANIZACIJA\28km\Hays\_061215 to 0612014 Organized.dat  
 D:\WindPRO\Course\proj\mt\_hays\88 Mt Hays wind data\ORGANIZACIJA\28km\Hays\_081215 to 0812014 Organized.dat  
 D:\WindPRO\Course\proj\mt\_hays\88 Mt Hays wind data\ORGANIZACIJA\28km\Hays\_101215 to 1012014 Organized.dat  
 D:\WindPRO\Course\proj\mt\_hays\88 Mt Hays wind data\ORGANIZACIJA\28km\Hays\_1215 to 1215014 Organized.dat  
 D:\WindPRO\Course\proj\mt\_hays\88 Mt Hays wind data\ORGANIZACIJA\28km\Hays\_0116 to 0116014 Organized.dat  
 D:\WindPRO\Course\proj\mt\_hays\88 Mt Hays wind data\ORGANIZACIJA\28km\Hays\_0316 to 0316014 Organized.dat  
 D:\WindPRO\Course\proj\mt\_hays\88 Mt Hays wind data\ORGANIZACIJA\28km\Hays\_0516 to 0516014 Organized.dat  
 D:\WindPRO\Course\proj\mt\_hays\88 Mt Hays wind data\ORGANIZACIJA\28km\Hays\_0716 to 0716014 Organized.dat  
 D:\WindPRO\Course\proj\mt\_hays\88 Mt Hays wind data\ORGANIZACIJA\28km\Hays\_0916 to 0916014 Organized.dat  
 D:\WindPRO\Course\proj\mt\_hays\88 Mt Hays wind data\ORGANIZACIJA\28km\Hays\_1116 to 1116014 Organized.dat  
 D:\WindPRO\Course\proj\mt\_hays\88 Mt Hays wind data\ORGANIZACIJA\28km\Hays\_1316 to 1316014 Organized.dat  
 D:\WindPRO\Course\proj\mt\_hays\88 Mt Hays wind data\ORGANIZACIJA\28km\Hays\_1516 to 1516014 Organized.dat  
 D:\WindPRO\Course\proj\mt\_hays\88 Mt Hays wind data\ORGANIZACIJA\28km\Hays\_1716 to 1716014 Organized.dat  
 D:\WindPRO\Course\proj\mt\_hays\88 Mt Hays wind data\ORGANIZACIJA\28km\Hays\_1916 to 1916014 Organized.dat  
 D:\WindPRO\Course\proj\mt\_hays\88 Mt Hays wind data\ORGANIZACIJA\28km\Hays\_2116 to 2116014 Organized.dat  
 D:\WindPRO\Course\proj\mt\_hays\88 Mt Hays wind data\ORGANIZACIJA\28km\Hays\_2316 to 2316014 Organized.dat  
 D:\WindPRO\Course\proj\mt\_hays\88 Mt Hays wind data\ORGANIZACIJA\28km\Hays\_2516 to 2516014 Organized.dat  
 D:\WindPRO\Course\proj\mt\_hays\88 Mt Hays wind data\ORGANIZACIJA\28km\Hays\_2716 to 2716014 Organized.dat  
 D:\WindPRO\Course\proj\mt\_hays\88 Mt Hays wind data\ORGANIZACIJA\28km\Hays\_2916 to 2916014 Organized.dat  
 D:\WindPRO\Course\proj\mt\_hays\88 Mt Hays wind data\ORGANIZACIJA\28km\Hays\_3116 to 3116014 Organized.dat  
 D:\WindPRO\Course\proj\mt\_hays\88 Mt Hays wind data\ORGANIZACIJA\28km\Hays\_0117 to 0117014 Organized.dat  
 D:\WindPRO\Course\proj\mt\_hays\88 Mt Hays wind data\ORGANIZACIJA\28km\Hays\_0317 to 0317014 Organized.dat  
 D:\WindPRO\Course\proj\mt\_hays\88 Mt Hays wind data\ORGANIZACIJA\28km\Hays\_0517 to 0517014 Organized.dat  
 D:\WindPRO\Course\proj\mt\_hays\88 Mt Hays wind data\ORGANIZACIJA\28km\Hays\_0717 to 0717014 Organized.dat  
 D:\WindPRO\Course\proj\mt\_hays\88 Mt Hays wind data\ORGANIZACIJA\28km\Hays\_0917 to 0917014 Organized.dat  
 D:\WindPRO\Course\proj\mt\_hays\88 Mt Hays wind data\ORGANIZACIJA\28km\Hays\_1117 to 1117014 Organized.dat  
 D:\WindPRO\Course\proj\mt\_hays\88 Mt Hays wind data\ORGANIZACIJA\28km\Hays\_1317 to 1317014 Organized.dat  
 D:\WindPRO\Course\proj\mt\_hays\88 Mt Hays wind data\ORGANIZACIJA\28km\Hays\_1517 to 1517014 Organized.dat  
 D:\WindPRO\Course\proj\mt\_hays\88 Mt Hays wind data\ORGANIZACIJA\28km\Hays\_1717 to 1717014 Organized.dat  
 D:\WindPRO\Course\proj\mt\_hays\88 Mt Hays wind data\ORGANIZACIJA\28km\Hays\_1917 to 1917014 Organized.dat  
 D:\WindPRO\Course\proj\mt\_hays\88 Mt Hays wind data\ORGANIZACIJA\28km\Hays\_2117 to 2117014 Organized.dat  
 D:\WindPRO\Course\proj\mt\_hays\88 Mt Hays wind data\ORGANIZACIJA\28km\Hays\_2317 to 2317014 Organized.dat  
 D:\WindPRO\Course\proj\mt\_hays\88 Mt Hays wind data\ORGANIZACIJA\28km\Hays\_2517 to 2517014 Organized.dat  
 D:\WindPRO\Course\proj\mt\_hays\88 Mt Hays wind data\ORGANIZACIJA\28km\Hays\_2717 to 2717014 Organized.dat  
 D:\WindPRO\Course\proj\mt\_hays\88 Mt Hays wind data\ORGANIZACIJA\28km\Hays\_2917 to 2917014 Organized.dat  
 D:\WindPRO\Course\proj\mt\_hays\88 Mt Hays wind data\ORGANIZACIJA\28km\Hays\_3117 to 3117014 Organized.dat

Printed/Page

09/10/2003 7:53 PM / 7

Licensed user:

WindPRO course version

Time-limited until 06.10.03

Noble

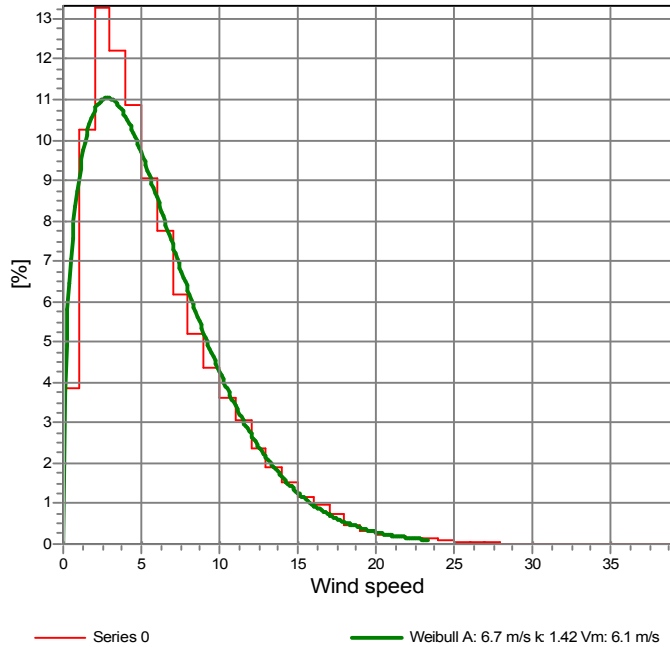
Calculated:

09/10/2003 7:53 PM/

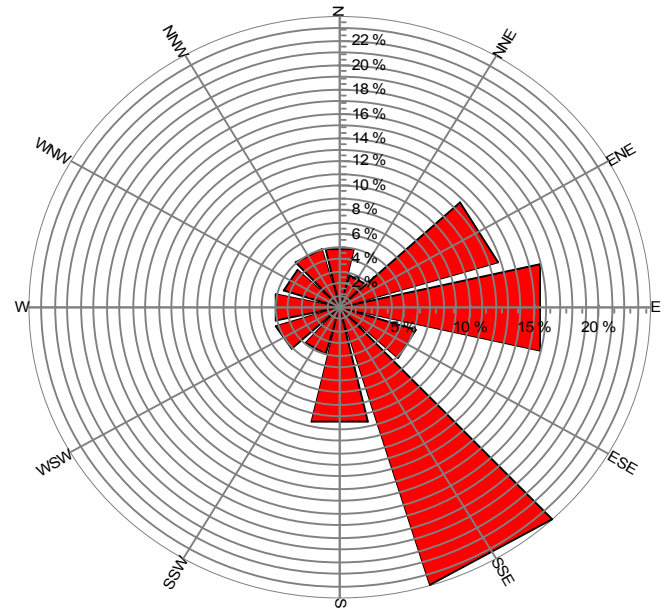
### Meteo data report, height: 30.0 m

Name of meteo object: Met tower 1

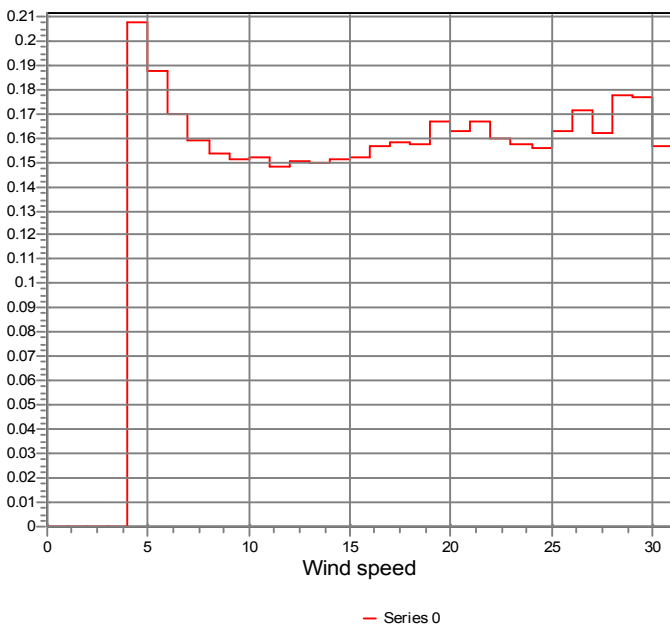
Frequency



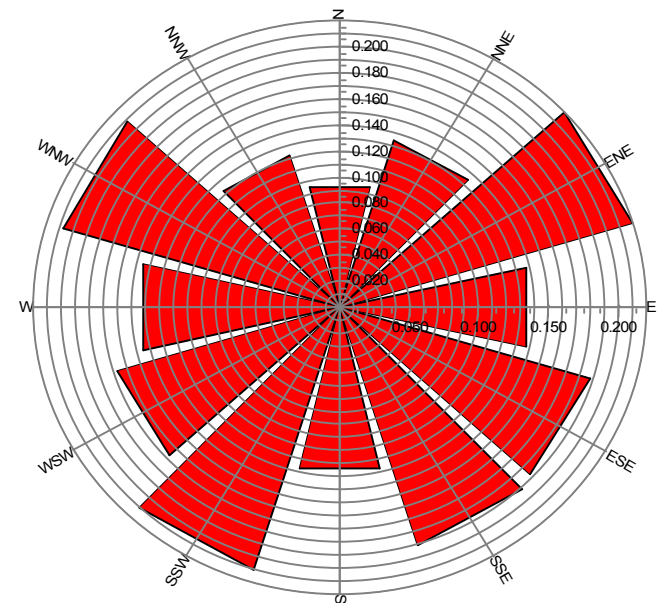
Frequency



Turbulence V>4.0 m/s



Turbulence V>4.0 m/s



Project:  
**Mt Hays**

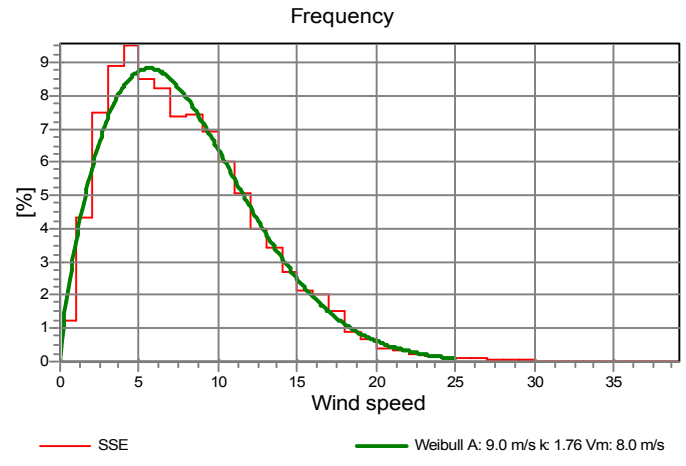
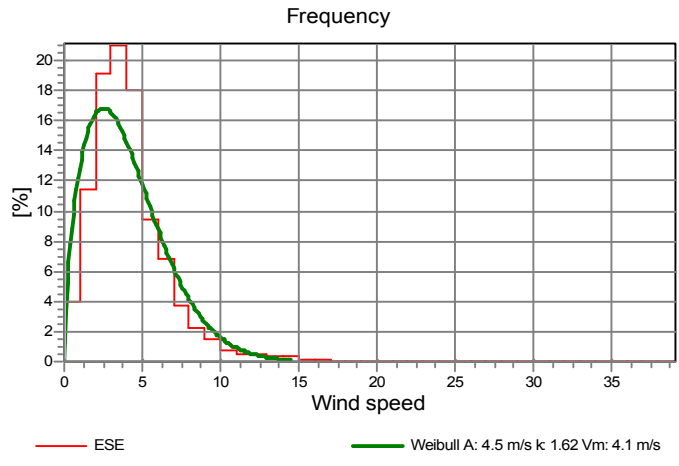
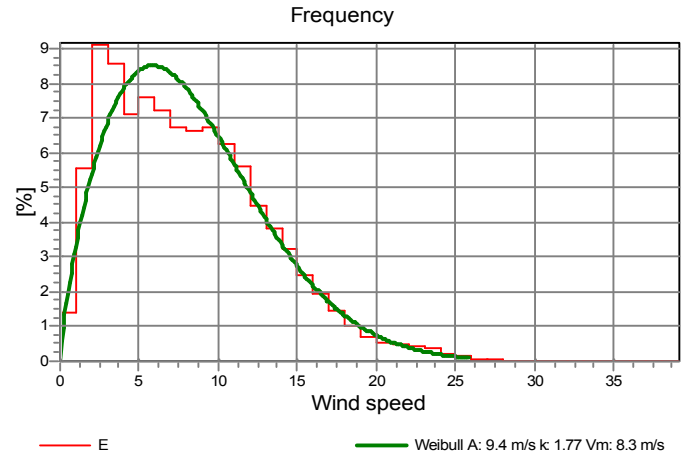
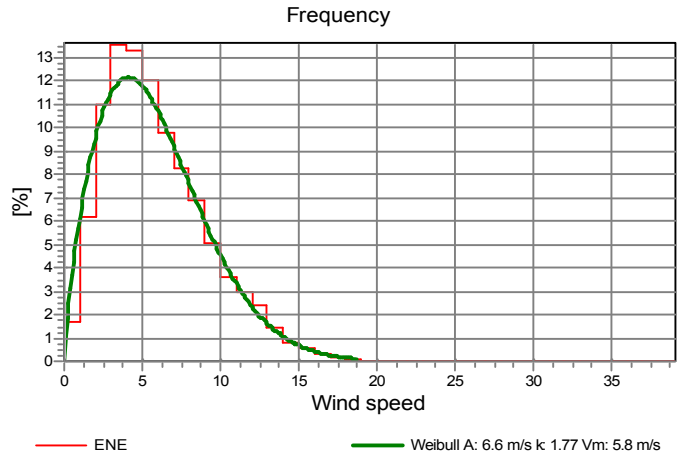
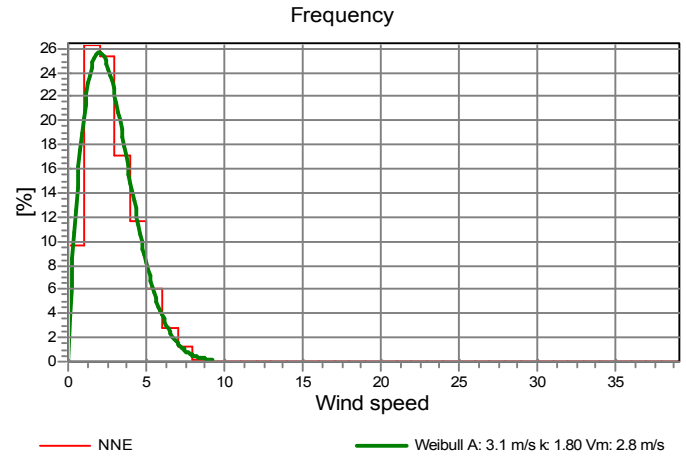
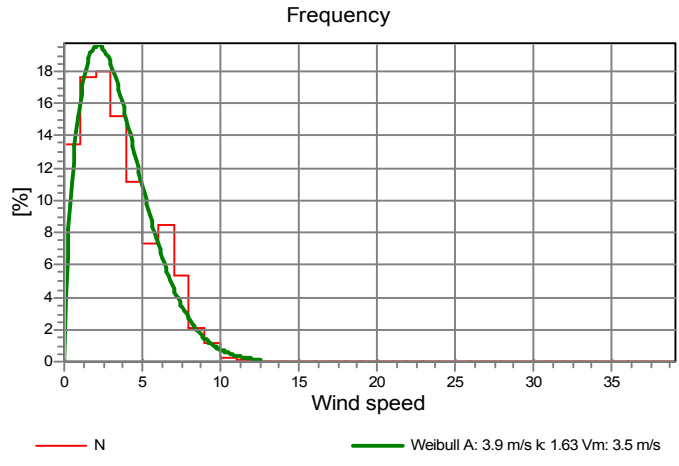
Description:  
 Data for: Mt Hays  
 D:\WindPRO\Case\Project\Mt Hays\Wind Data\ORGANIZED\28hour\Wsp\_051177 to 051184 Organized.dat  
 D:\WindPRO\Case\Project\Mt Hays\Wind Data\ORGANIZED\28hour\Wsp\_061205 to 061212 Organized.dat  
 D:\WindPRO\Case\Project\Mt Hays\Wind Data\ORGANIZED\28hour\Wsp\_061213 to 061220 Organized.dat  
 D:\WindPRO\Case\Project\Mt Hays\Wind Data\ORGANIZED\28hour\Wsp\_061221 to 061228 Organized.dat  
 D:\WindPRO\Case\Project\Mt Hays\Wind Data\ORGANIZED\28hour\Wsp\_071205 to 071212 Organized.dat  
 D:\WindPRO\Case\Project\Mt Hays\Wind Data\ORGANIZED\28hour\Wsp\_071213 to 071220 Organized.dat  
 D:\WindPRO\Case\Project\Mt Hays\Wind Data\ORGANIZED\28hour\Wsp\_071221 to 071228 Organized.dat  
 D:\WindPRO\Case\Project\Mt Hays\Wind Data\ORGANIZED\28hour\Wsp\_081205 to 081212 Organized.dat  
 D:\WindPRO\Case\Project\Mt Hays\Wind Data\ORGANIZED\28hour\Wsp\_081213 to 081220 Organized.dat  
 D:\WindPRO\Case\Project\Mt Hays\Wind Data\ORGANIZED\28hour\Wsp\_081221 to 081228 Organized.dat  
 D:\WindPRO\Case\Project\Mt Hays\Wind Data\ORGANIZED\28hour\Wsp\_091205 to 091212 Organized.dat  
 D:\WindPRO\Case\Project\Mt Hays\Wind Data\ORGANIZED\28hour\Wsp\_091213 to 091220 Organized.dat  
 D:\WindPRO\Case\Project\Mt Hays\Wind Data\ORGANIZED\28hour\Wsp\_091221 to 091228 Organized.dat  
 D:\WindPRO\Case\Project\Mt Hays\Wind Data\ORGANIZED\28hour\Wsp\_101205 to 101212 Organized.dat  
 D:\WindPRO\Case\Project\Mt Hays\Wind Data\ORGANIZED\28hour\Wsp\_101213 to 101220 Organized.dat  
 D:\WindPRO\Case\Project\Mt Hays\Wind Data\ORGANIZED\28hour\Wsp\_101221 to 101228 Organized.dat  
 D:\WindPRO\Case\Project\Mt Hays\Wind Data\ORGANIZED\28hour\Wsp\_111205 to 111212 Organized.dat  
 D:\WindPRO\Case\Project\Mt Hays\Wind Data\ORGANIZED\28hour\Wsp\_111213 to 111220 Organized.dat  
 D:\WindPRO\Case\Project\Mt Hays\Wind Data\ORGANIZED\28hour\Wsp\_111221 to 111228 Organized.dat  
 D:\WindPRO\Case\Project\Mt Hays\Wind Data\ORGANIZED\28hour\Wsp\_121205 to 121212 Organized.dat  
 D:\WindPRO\Case\Project\Mt Hays\Wind Data\ORGANIZED\28hour\Wsp\_121213 to 121220 Organized.dat  
 D:\WindPRO\Case\Project\Mt Hays\Wind Data\ORGANIZED\28hour\Wsp\_121221 to 121228 Organized.dat

Printed Page  
09/10/2003 7:53 PM / 8  
 Licensed user:  
**WindPRO course version**  
Time-limited until 06.10.03

Noble  
Calculated:  
09/10/2003 7:53 PM/

**Meteo data report, height: 30.0 m**

Name of meteo object: Met tower 1



Project:

**Mt Hays**

Description:

DATA SOURCE  
 D:\WindPRO\Case\Project\Mt Hays\wind data\ORGANIZED\28hour\Wsp\_051217 to 051218 Organized.dat  
 D:\WindPRO\Case\Project\Mt Hays\wind data\ORGANIZED\28hour\Wsp\_051219 to 051220 Organized.dat  
 D:\WindPRO\Case\Project\Mt Hays\wind data\ORGANIZED\28hour\Wsp\_051221 to 051222 Organized.dat  
 D:\WindPRO\Case\Project\Mt Hays\wind data\ORGANIZED\28hour\Wsp\_051223 to 051224 Organized.dat  
 D:\WindPRO\Case\Project\Mt Hays\wind data\ORGANIZED\28hour\Wsp\_051225 to 051226 Organized.dat  
 D:\WindPRO\Case\Project\Mt Hays\wind data\ORGANIZED\28hour\Wsp\_051227 to 051228 Organized.dat  
 D:\WindPRO\Case\Project\Mt Hays\wind data\ORGANIZED\28hour\Wsp\_051229 to 051230 Organized.dat  
 D:\WindPRO\Case\Project\Mt Hays\wind data\ORGANIZED\28hour\Wsp\_051231 to 051231 Organized.dat  
 D:\WindPRO\Case\Project\Mt Hays\wind data\ORGANIZED\28hour\Wsp\_051232 to 051233 Organized.dat  
 D:\WindPRO\Case\Project\Mt Hays\wind data\ORGANIZED\28hour\Wsp\_051234 to 051235 Organized.dat  
 D:\WindPRO\Case\Project\Mt Hays\wind data\ORGANIZED\28hour\Wsp\_051236 to 051237 Organized.dat  
 D:\WindPRO\Case\Project\Mt Hays\wind data\ORGANIZED\28hour\Wsp\_051238 to 051239 Organized.dat  
 D:\WindPRO\Case\Project\Mt Hays\wind data\ORGANIZED\28hour\Wsp\_051240 to 051241 Organized.dat  
 D:\WindPRO\Case\Project\Mt Hays\wind data\ORGANIZED\28hour\Wsp\_051242 to 051243 Organized.dat  
 D:\WindPRO\Case\Project\Mt Hays\wind data\ORGANIZED\28hour\Wsp\_051244 to 051245 Organized.dat  
 D:\WindPRO\Case\Project\Mt Hays\wind data\ORGANIZED\28hour\Wsp\_051246 to 051247 Organized.dat  
 D:\WindPRO\Case\Project\Mt Hays\wind data\ORGANIZED\28hour\Wsp\_051248 to 051249 Organized.dat  
 D:\WindPRO\Case\Project\Mt Hays\wind data\ORGANIZED\28hour\Wsp\_051250 to 051251 Organized.dat  
 D:\WindPRO\Case\Project\Mt Hays\wind data\ORGANIZED\28hour\Wsp\_051252 to 051253 Organized.dat  
 D:\WindPRO\Case\Project\Mt Hays\wind data\ORGANIZED\28hour\Wsp\_051254 to 051255 Organized.dat  
 D:\WindPRO\Case\Project\Mt Hays\wind data\ORGANIZED\28hour\Wsp\_051256 to 051257 Organized.dat  
 D:\WindPRO\Case\Project\Mt Hays\wind data\ORGANIZED\28hour\Wsp\_051258 to 051259 Organized.dat  
 D:\WindPRO\Case\Project\Mt Hays\wind data\ORGANIZED\28hour\Wsp\_051260 to 051261 Organized.dat  
 D:\WindPRO\Case\Project\Mt Hays\wind data\ORGANIZED\28hour\Wsp\_051262 to 051263 Organized.dat  
 D:\WindPRO\Case\Project\Mt Hays\wind data\ORGANIZED\28hour\Wsp\_051264 to 051265 Organized.dat  
 D:\WindPRO\Case\Project\Mt Hays\wind data\ORGANIZED\28hour\Wsp\_051266 to 051267 Organized.dat  
 D:\WindPRO\Case\Project\Mt Hays\wind data\ORGANIZED\28hour\Wsp\_051268 to 051269 Organized.dat  
 D:\WindPRO\Case\Project\Mt Hays\wind data\ORGANIZED\28hour\Wsp\_051270 to 051271 Organized.dat  
 D:\WindPRO\Case\Project\Mt Hays\wind data\ORGANIZED\28hour\Wsp\_051272 to 051273 Organized.dat  
 D:\WindPRO\Case\Project\Mt Hays\wind data\ORGANIZED\28hour\Wsp\_051274 to 051275 Organized.dat  
 D:\WindPRO\Case\Project\Mt Hays\wind data\ORGANIZED\28hour\Wsp\_051276 to 051277 Organized.dat  
 D:\WindPRO\Case\Project\Mt Hays\wind data\ORGANIZED\28hour\Wsp\_051278 to 051279 Organized.dat  
 D:\WindPRO\Case\Project\Mt Hays\wind data\ORGANIZED\28hour\Wsp\_051280 to 051281 Organized.dat  
 D:\WindPRO\Case\Project\Mt Hays\wind data\ORGANIZED\28hour\Wsp\_051282 to 051283 Organized.dat  
 D:\WindPRO\Case\Project\Mt Hays\wind data\ORGANIZED\28hour\Wsp\_051284 to 051285 Organized.dat  
 D:\WindPRO\Case\Project\Mt Hays\wind data\ORGANIZED\28hour\Wsp\_051286 to 051287 Organized.dat  
 D:\WindPRO\Case\Project\Mt Hays\wind data\ORGANIZED\28hour\Wsp\_051288 to 051289 Organized.dat  
 D:\WindPRO\Case\Project\Mt Hays\wind data\ORGANIZED\28hour\Wsp\_051290 to 051291 Organized.dat  
 D:\WindPRO\Case\Project\Mt Hays\wind data\ORGANIZED\28hour\Wsp\_051292 to 051293 Organized.dat  
 D:\WindPRO\Case\Project\Mt Hays\wind data\ORGANIZED\28hour\Wsp\_051294 to 051295 Organized.dat  
 D:\WindPRO\Case\Project\Mt Hays\wind data\ORGANIZED\28hour\Wsp\_051296 to 051297 Organized.dat  
 D:\WindPRO\Case\Project\Mt Hays\wind data\ORGANIZED\28hour\Wsp\_051298 to 051299 Organized.dat  
 D:\WindPRO\Case\Project\Mt Hays\wind data\ORGANIZED\28hour\Wsp\_051300 to 051301 Organized.dat

Printed Page  
 09/10/2003 7:53 PM / 10  
 Licensed user:  
**WindPRO course version**  
 Time-limited until 06.10.03

Noble  
 Calculated:  
 09/10/2003 7:53 PM/

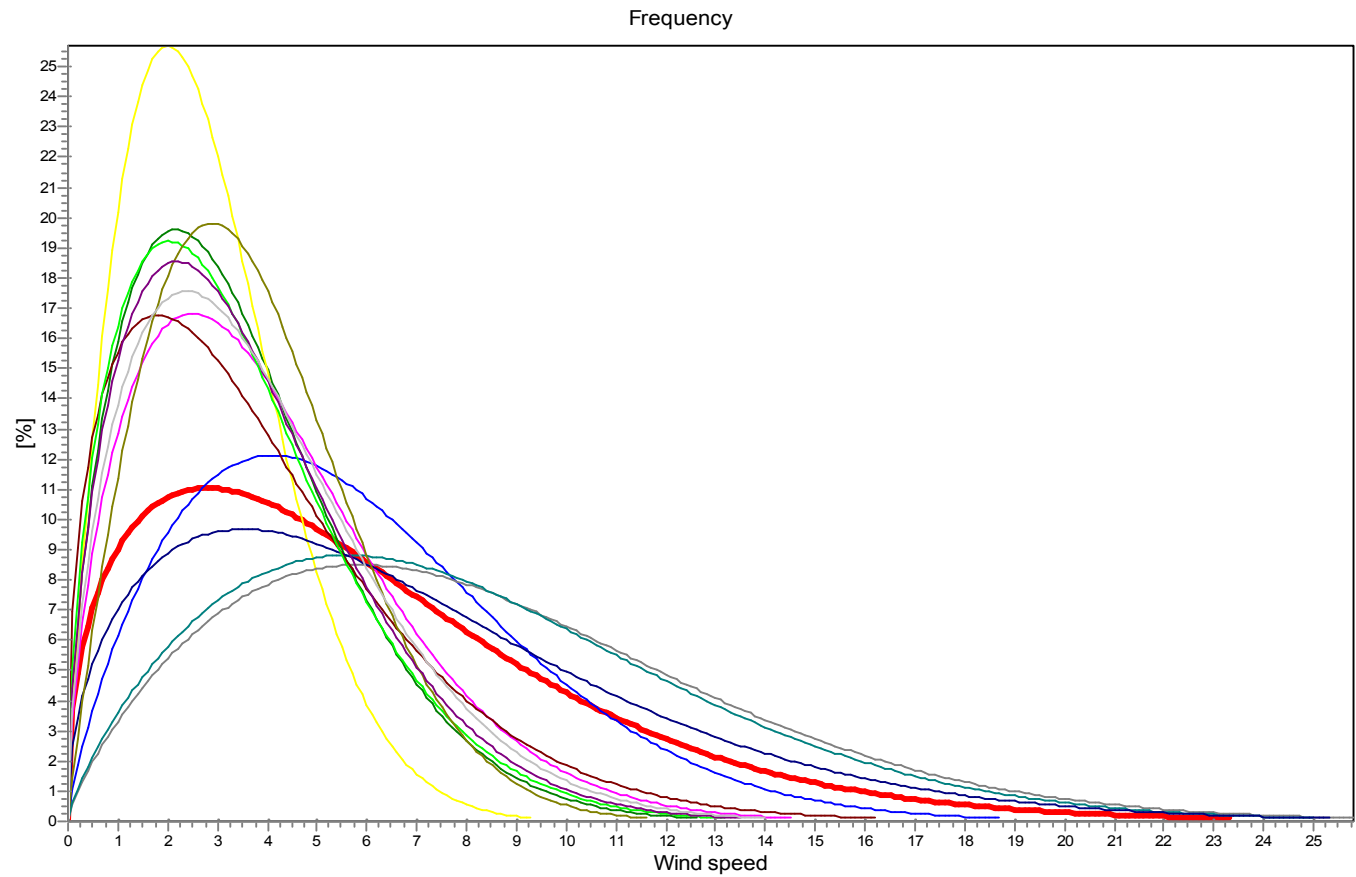
**Meteo data report, height: 30.0 m**

Name of meteo object: Met tower 1

**Weibull Data**

k-parameter correction: 0.0080/m

| Sector | A- parameter [m/s] | Mean wind speed [m/s] | k- parameter | Frequency | Frequency [%] | Wind shear |
|--------|--------------------|-----------------------|--------------|-----------|---------------|------------|
| 0-N    | 3.91               | 3.50                  | 1.625        | 4.96      | 5.0           | -0.34      |
| 1-NNE  | 3.14               | 2.79                  | 1.805        | 2.81      | 2.8           | -0.73      |
| 2-ENE  | 6.57               | 5.85                  | 1.767        | 12.72     | 12.7          | 0.61       |
| 3-E    | 9.38               | 8.35                  | 1.769        | 15.95     | 15.9          | 0.40       |
| 4-ESE  | 4.54               | 4.07                  | 1.617        | 6.20      | 6.2           | 0.44       |
| 5-SSE  | 9.02               | 8.03                  | 1.762        | 24.00     | 24.0          | 0.09       |
| 6-S    | 7.66               | 6.94                  | 1.471        | 9.72      | 9.7           | 0.67       |
| 7-SSW  | 4.39               | 4.00                  | 1.404        | 3.97      | 4.0           | 0.20       |
| 8-WSW  | 3.93               | 3.53                  | 1.560        | 5.10      | 5.1           | 0.12       |
| 9-W    | 4.22               | 3.74                  | 1.920        | 5.08      | 5.1           | 0.12       |
| 10-WNW | 4.09               | 3.67                  | 1.587        | 4.51      | 4.5           | 0.42       |
| 11-NNW | 4.34               | 3.89                  | 1.608        | 5.00      | 5.0           | 0.01       |
| mean   | 6.67               | 6.07                  | 1.415        | 100.00    | 100.0         | 0.29       |



- Total A: 6.7 m/s k: 1.42 Vm: 6.1 m/s
- N A: 3.9 m/s k: 1.63 Vm: 3.5 m/s
- NNE A: 3.1 m/s k: 1.80 Vm: 2.8 m/s
- ENE A: 6.6 m/s k: 1.77 Vm: 5.8 m/s
- E A: 9.4 m/s k: 1.77 Vm: 8.3 m/s
- ESE A: 4.5 m/s k: 1.62 Vm: 4.1 m/s
- SSE A: 9.0 m/s k: 1.76 Vm: 8.0 m/s
- S A: 7.7 m/s k: 1.47 Vm: 6.9 m/s
- SSW A: 4.4 m/s k: 1.40 Vm: 4.0 m/s
- WSW A: 3.9 m/s k: 1.56 Vm: 3.5 m/s
- W A: 4.2 m/s k: 1.92 Vm: 3.7 m/s
- WNW A: 4.1 m/s k: 1.59 Vm: 3.7 m/s
- NNW A: 4.3 m/s k: 1.61 Vm: 3.9 m/s