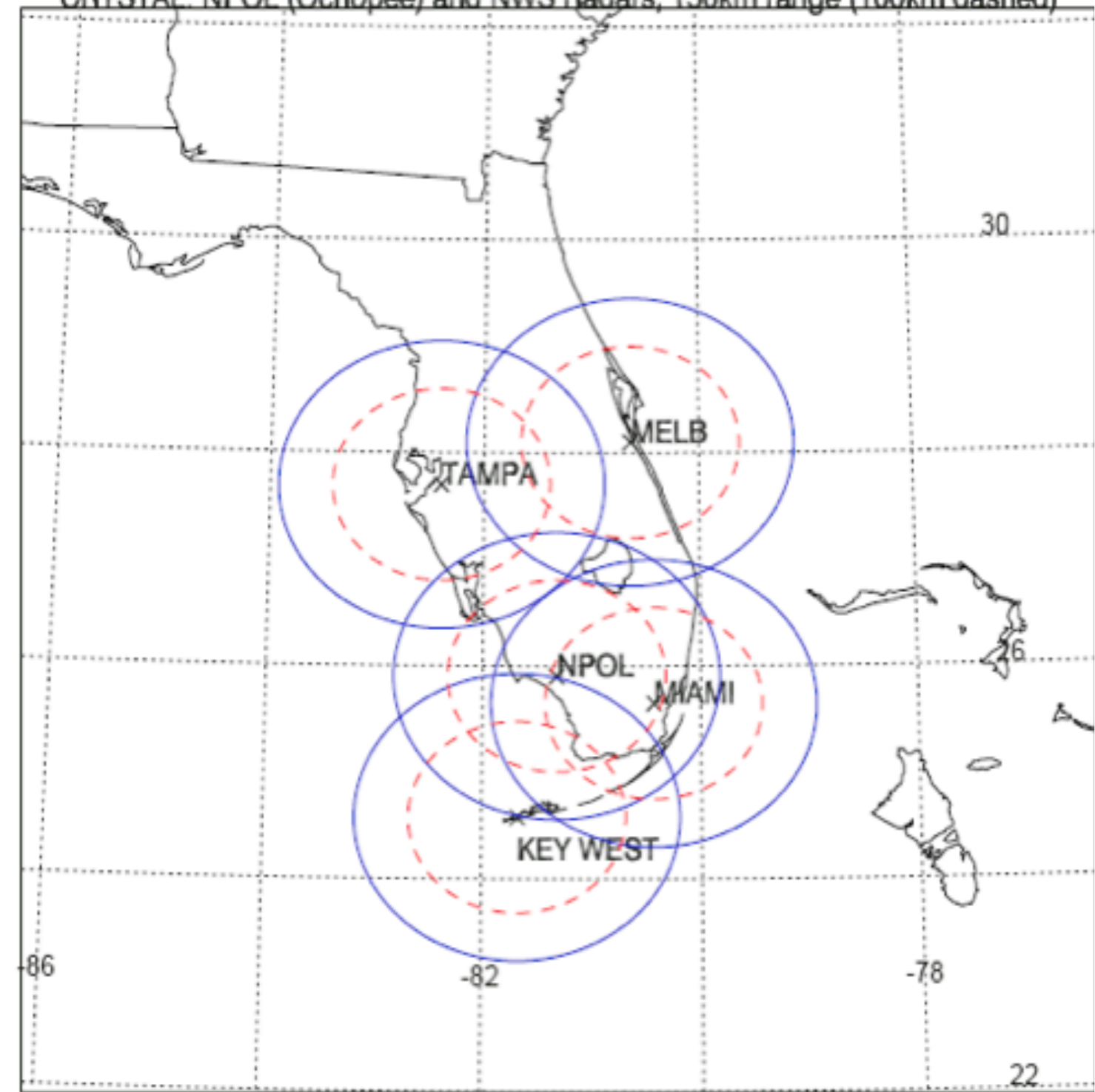


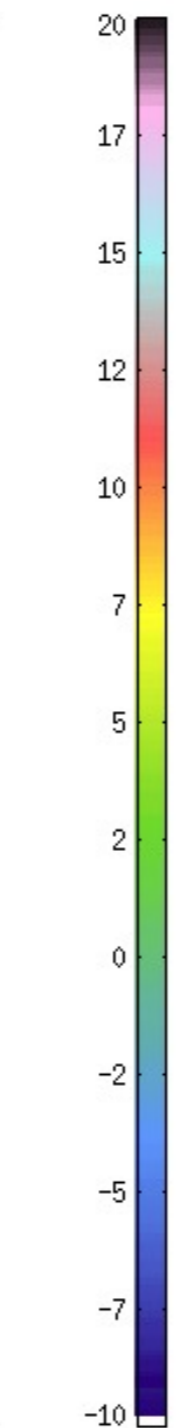
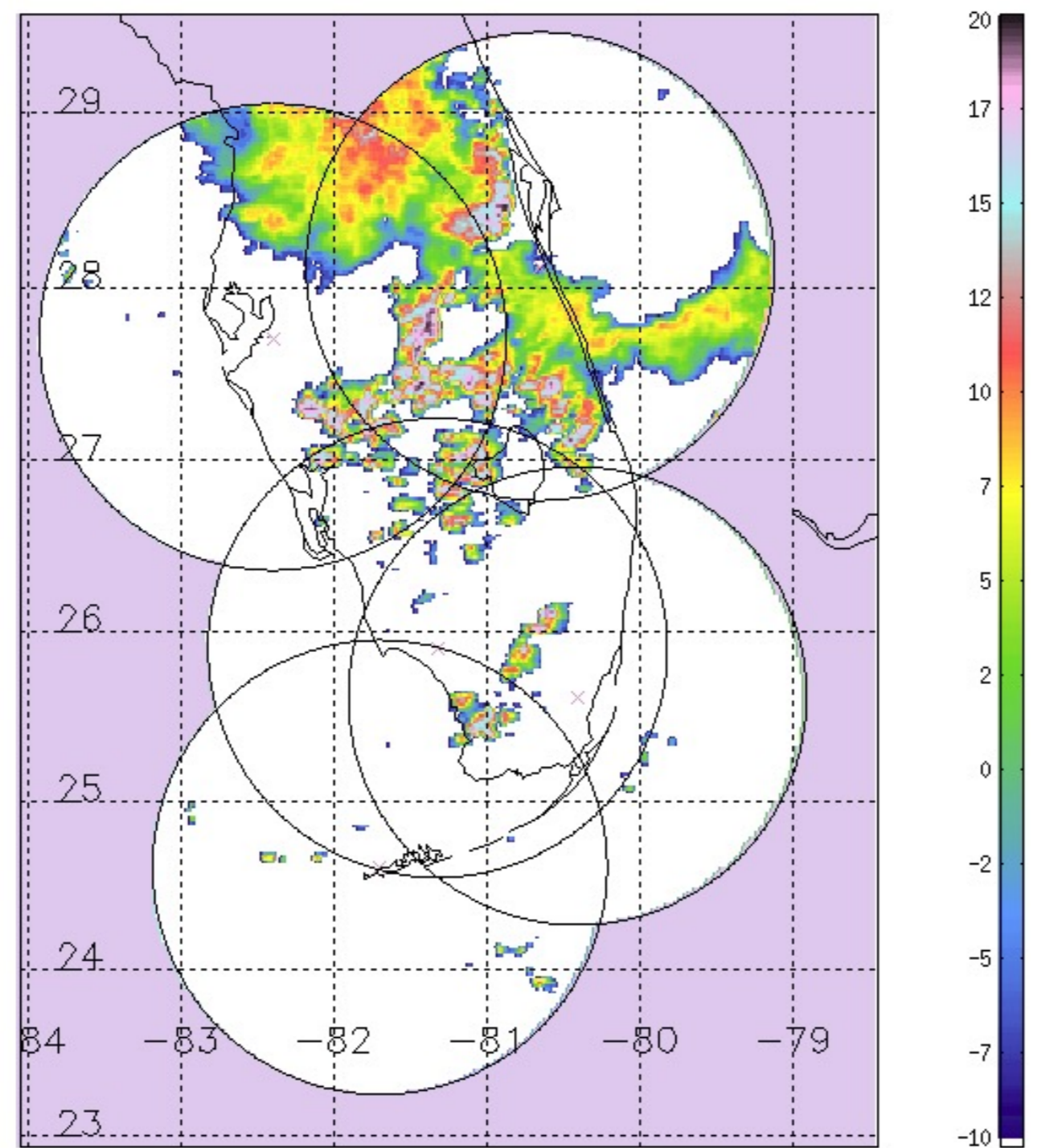
Radars

CRYSTAL: NPOL (Ochopee) and NWS Radars, 150km range (100km dashed)



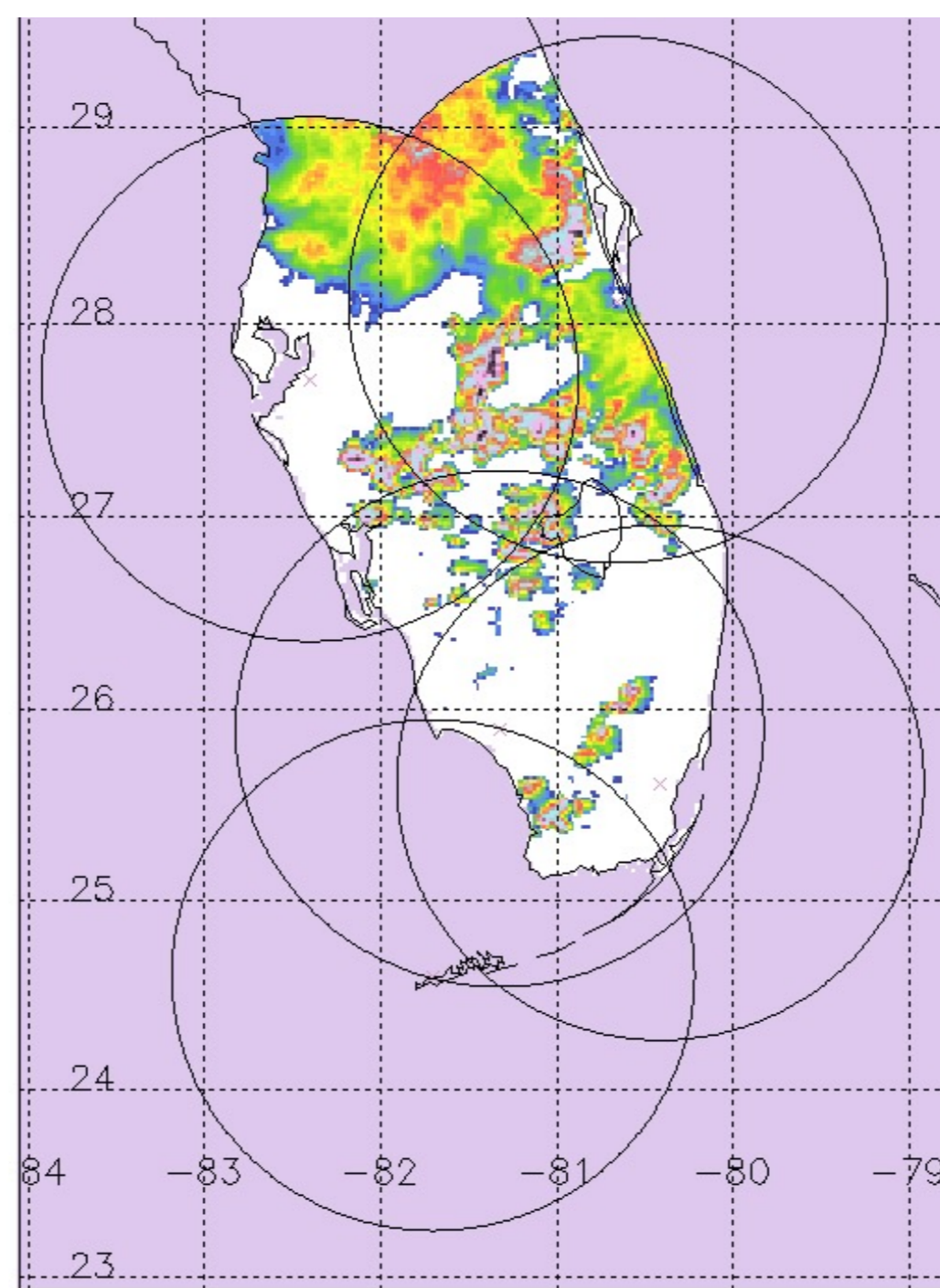
Rainrate

Merged rain map at 2 km:
21 July 2002 2000 UTC

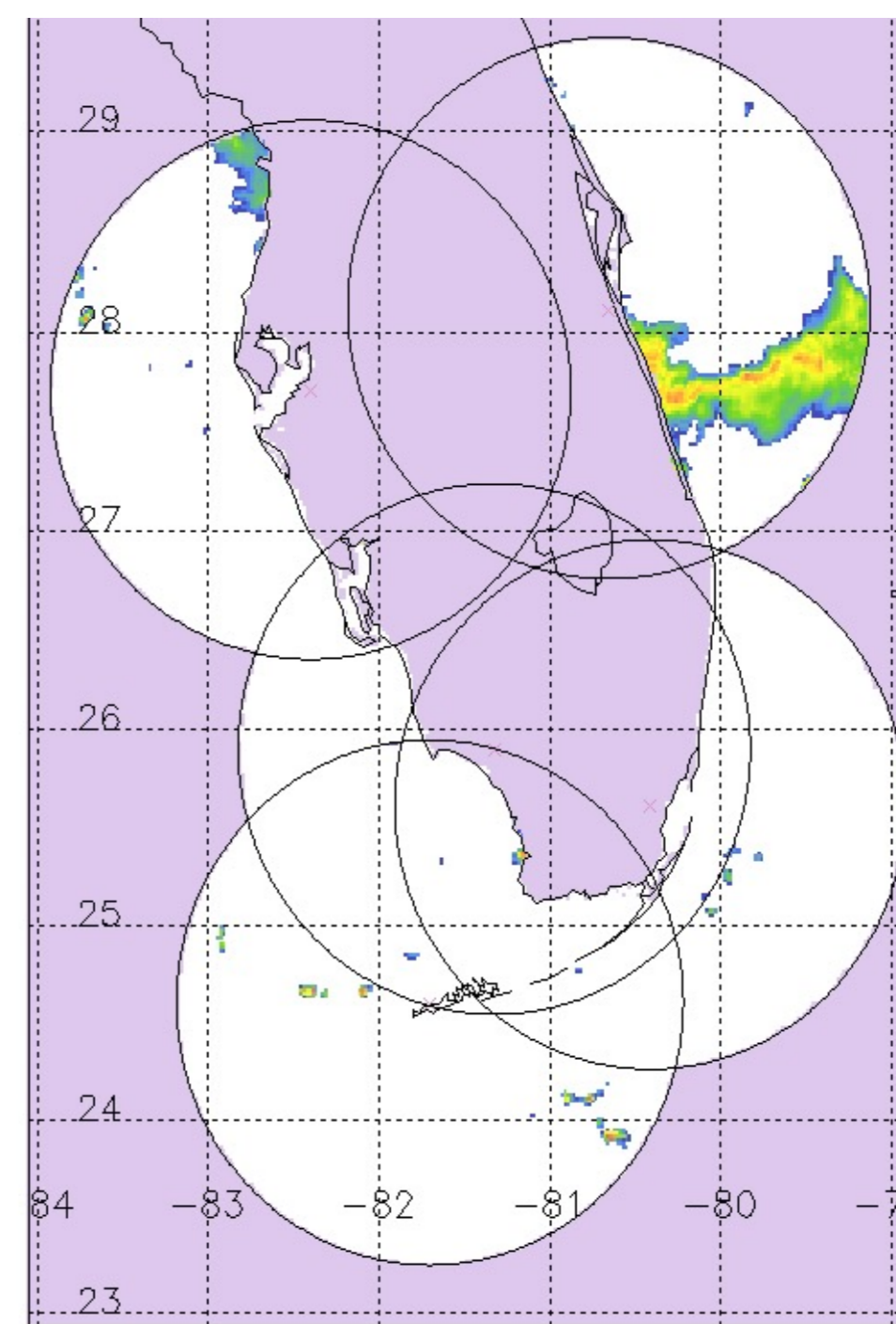


dBZ
(mm hr⁻¹)

Seamasked

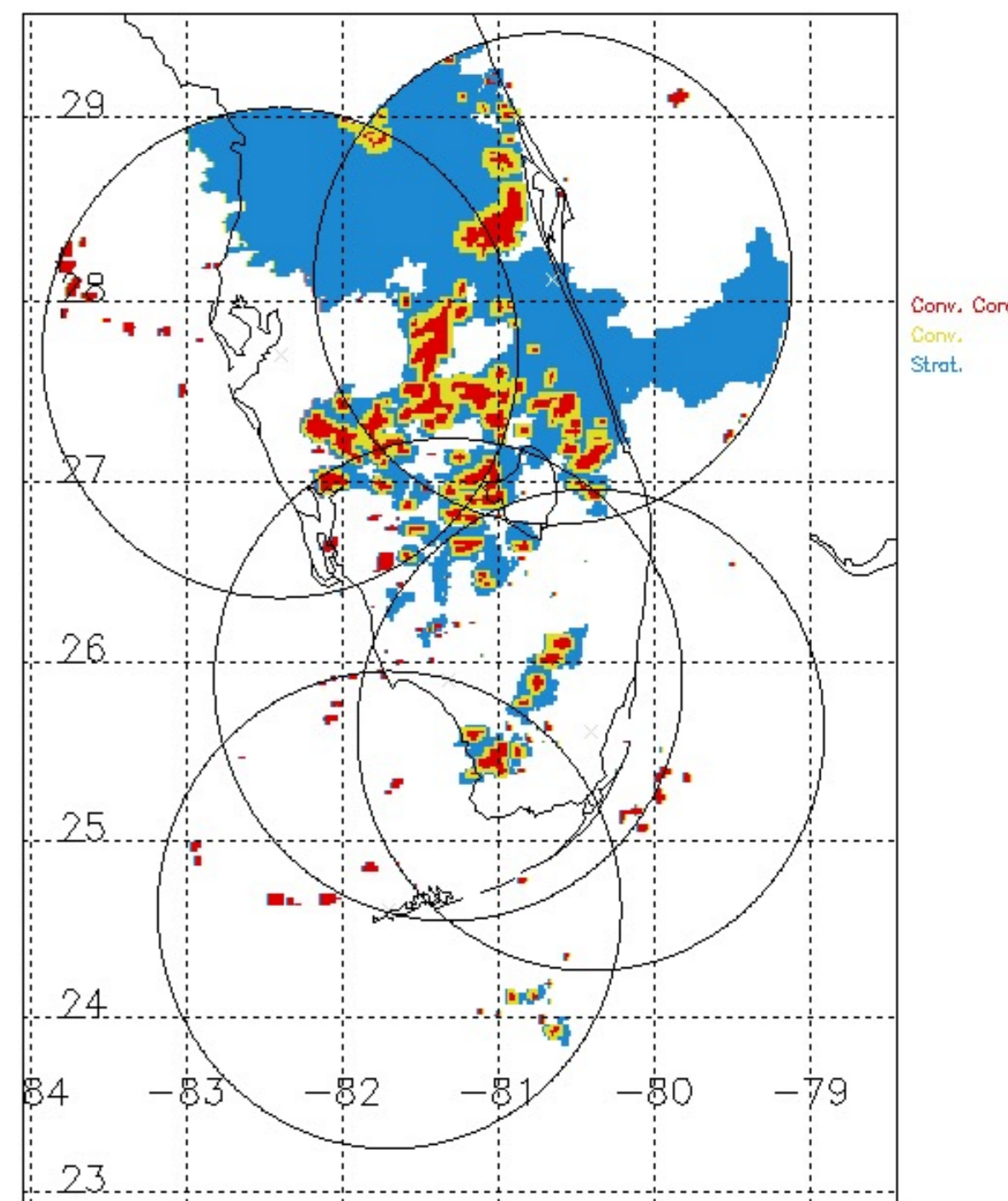


Landmasked



Convective-Stratiform

Merged C/S map at 2 km:
21 July 2002 2000 UTC



Conv. Area: 14940 km²; Strat. Area: -32768 km²; Conv. Area Frac.: 28 %
Cond. Conv. Rain: 15.0296 mm hr⁻²; Strat. Rain: 2.71426 mm hr⁻²; Conv. Rain Frac.: 84 %